



# C.label

**C.label®** is a low-cost, smart RFID paper tag with a silver ink printed antenna.

ASK manufactures

**C.label®** using an established reel-to-reel process with a high production capacity.

Inline production tests ensure that the RFID market's strict requirements for reliability and sustainable performance are completely satisfied.

## **C.label®** RFID paper tag with printed antenna

### High production capacity

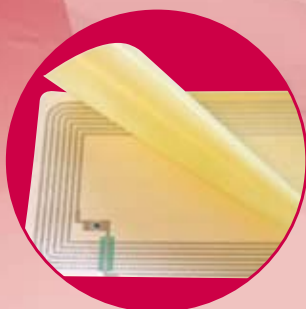
- 120 million RFID antennas delivered worldwide
- Inline production testing
- Roadmap and contingency for large volumes

### Superlative technology

- The most technologically advanced printed paper antenna since 1997
- Suitable for RFID printers
- Reliable and environmentally friendly

### Comprehensive range

- Complete range of form-factors
- Supported protocols:
  - UHF
  - 13.56MHz ISO15693/ISO14443





## Personalization

- Customized artwork printing
- Chip serial number post-printing
- Bar code post-printing
- Tag data personalization
- Thermal-transfer paper

## Packaging

- Self-adhesive labels, standard labels, plastic cards
- Format: miniature, CD, credit-card, logistics, and/or customized on request
- Material: direct thermal paper, thermal-transfer paper, PVC, PET

## System interoperability

- Interoperable with all mainstream readers and printers
- Tags and antennas optimized for specific requirements (stacking, material...)

Main Label specifications	Long range UHF	Vicinity HF	Proximity HF
Frequency	860-965 MHz	13.56 MHz	13.56 MHz
Supported protocols*	EPC class 1 Gen 2	ISO15693 & ISO18000	ISO14443
Supported chip*	EPC Gen 2	I.Code SLI, my-D vicinity	CTS256B, CTS512B, Mifare®, my-D vicinity
EEPROM (bits)	64 bits to 512 bits	96 bits to 2 kbits	256 bits to 64 kbytes
Unique S/N (bits)*	64* or EPC	64* or EPC	56/64*
Memory protection	Read Only or Read/Write	Read/Write	Read/Write/Lockable zone
Anti-collision	Up to 200 per second	Up to 100 per second	Up to 100 per second
Data retention time	10 years	10 years	10 years
Communication range:			
Typical	15 feet (5 m)	20" (50 cm)	4" (10 cm)
Maximum	25 feet (8 m)	60" (150 cm)	8" (20 cm)
Working temperature	- 4°F to + 160°F (-20°C to + 70°C)*	- 4°F to + 160°F (-20°C to + 70°C)*	- 4°F to + 160°F (-20°C to + 70°C)*
Storage temperature	- 4°F to + 160°F (-20°C to + 70°C)*	- 4°F to + 160°F (-20°C to + 70°C)*	- 4°F to + 160°F (-20°C to + 70°C)*

\* Depending on product - C.label® is a registered trademark of ASK S.A.

